



*since 1972*  
*above and under the sea*



# Over half a century of great successes.

## Pioneers in diving

At the end of the 60's underwater operations were performed mainly by divers, who immersed with heavy and bulky equipment limiting their movements. This underwater equipment depended on the surface one, from where air was delivered through compressors supplying the diving suit.



Dedication to diving operations led enterprising young people to acknowledge opportunities inside our harbour, where every day cargo ships arrived requiring repair works on hull, propellers or submersed equipment. Operations varied from laying of first underwater ducts for coast municipalities required by Acam and Enel, to underwater maintenance of the first ferry-boats on the line to Sardinia and Corsica, up to laying of electric lines from Piombino to Isola d'Elba. Many other works were realized, which thanks to an increased freedom to act by means of lighter and more comfortable equipment, assured higher dynamism, efficiency in less time and made the passion a job. It was the year 1972.





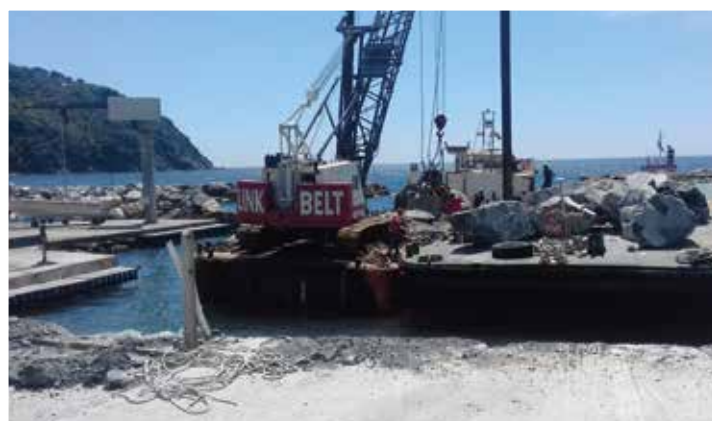
# Quality makes the difference.

Today **Art Sub** is one of the most important and qualified firm in this field, with **20 operators**, an administrative headquarter, and many offices over a **200 sqm** surface, where the management, the commercial department and the purchase and technical functions operate. **Three bases** of operations, and a fleet composed by **15 marine vessels**, tug boats, pontoons, barges and powerboats, further to technologically advanced



underwater equipment. Various services, among which **dredging, beach nourishment, demolition and construction** of **piers, docks, quays**, and **landing stages**, installation of **floating landing stages, catenaries and mooring**, **certified underwater welding** and cut works, **sea recoveries**, installation, maintenance and direction of **underwater piping and ducts, video-inspections** and **photo-video documentations**, **non destructive checks**, **underwater visits** and **inspections** on **bottoms** and **ship equipments**, **cleaning of valves, grids** and **polishing of propellers**, sea maintenance and repair works.







## Administrative Legal Seat

**La Spezia** in Via Pitelli 95/A. The Administrative Unit has been recently object of important investments, to make it more operative and able to satisfy the market needs, such as IT equipment, PCs, printers and business administration programs. **Offices** of this Unit are distributed on a

surface wider than **200 sqm**, and are the seat of the Commercial, Administrative, and Technical Division, whose rooms are located at the first floor of an own industrial building, where the ground floor, approx. **250 sqm**, is used as general **warehouse**.



## Bases of Operations

1) **Darsena Pagliari**, V.le S. Bartolomeo 777/R La Spezia. The main Base of Operations is located inside an own building of approx. **300 sqm**, where further to dressing rooms for operators, the underwater equipment warehouse

is located, as well as the business means park and an outside area where means and equipments are maintained. The Darsena offers mooring for minor vessels. Major vessels are moored in the harbour.



2) **Via Pitelli 95/A** La Spezia. The second base of operations is 300 meters away from the main base of operations, inside an own building of approx. **250 sqm**, used as **warehouse** for sea equipment, further to an outside **workshop** of approx. **100 sqm** and a wide pertinent square.

3) **V.le S. Bartolomeo 238** La Spezia. Own **warehouse** of approx. **100 sqm**, used as deposit for equipment.

## Activities

Art Sub is active in harbour, state-owned, and river environments. Specifically, its activity is dedicated to provide **sea building** and **carpentry services**, both onshore and offshore, supported by qualified employees, such as **Technical Divers** with relevant authorizations for

immersion and professional competence in bulding and carpentry, in underwater cutting and **welding activities**. Art Sub is specialised in installation of **underwater ducts** and relevant laying-down of **collars** and **anchorages** and **signaling buoys**. Members of its staff are qualified **Operators**



and **Crane Operators**, to drive and control maritime vessels for any lifting operations, but able also to operate for for sea-transport of vehicles and various good. Another qualifying sector is represented by **maintenance, control, verification**, and service tasks, mailly for **hydroelectric power plants**. Activities performed by specialised underwater operators for great Groups relate to **desanding** of intake systems both in **rivers** and **sea** through suction pumps for dredging, **inspection** in underwater wells and tunnels, sealing of **intake systems, cutting** and **welding** of metal parts, **resining, cleaning of grids** and mainte-

nance of suction **pumps** with underwater **inspections** and maintenance of **cable ducts**. Further to these activities, high specialised underwater services are supplied, as **docking of ships, leak infill**, underwater **video-photo-services, ship hull** and **bottom inspections**, non destructive thickness checks, assistance for **cleaning** of seabed from **bombs** and remnants of war and other materials of various origin, as well as services aimed to a general check of harbours and rivers, as **bathymetries, measurements** of seabeds, **drilling**, laying of **anti-pollution plates** and containment plates for **dredging** operations.



## Vehicles and Equipment

Today the performance is mainly in providing services, thanks to the **sea fleet** including a **pontoon with lifting crane (30 m x 9 m)**, one **self-propelled pontoon with lifting crane (20 m x 7 m)**, one **pontoon (33 m x 11 m)**, one tugboat with lifting crane (14 m), one **tugboat (15 m)**, one **fast motor**

**boat (22 knots, 14 m)**, one **motor boat (9 m)**, one **pilot boat (9 m)**, three **motor boats (5 m)**, one **raft (6.5 m)**, one **raft (5 m)** regularly recorded in the sea marine section of La Spezia; one **vehicle park** with one **truck with crane**, four **vans**, one **excavator**; a work equipment park with **compres-**



**sors, hydraulic and electric control units**, equipment for **sea building** and **carpentry**, special equipment for **underwater operations** and standard equipment for immersions (**control units** for **life-safe**

**functions** during immersions, **underwater communication devices**, **helmets**, **diving suits**, **scuba tanks**, **compressors**).

## Manpower

Today Art Sub avails on **25 units** subdivided as follows:

Administrative Field: **2 administrators, 3 employees;**

Operating Field: **1 underwater operator (diver) supervisor, 11 underwater operators (divers; 8 vessel operators**



## Certifications

**RINA** CERT. SOA Cat. OG7 Class. III/bis

**RINA** CERT. ISO 45001 Occupational Health and Safety Management Systems

**RINA** CERT. UNI EN ISO 9001 Quality

**RINA** CERT. Inspection of hulls of floating boats

Associated **TECNOMAR** Distretto Ligure delle Tecnologie Marine



## Land Vehicles

Truck with crane Renault	DT535MJ	Van Fiat Fiorino	EH098KC
Van Fiat Ducato mobile workshop	DW877GA	Crawler excavator N.H. with ramps (buckets + drill)	N7GN06430
Van Opel Vivaro, 6-seater	EF915RH	Fork lift Hyster 25 q	B416A03180F



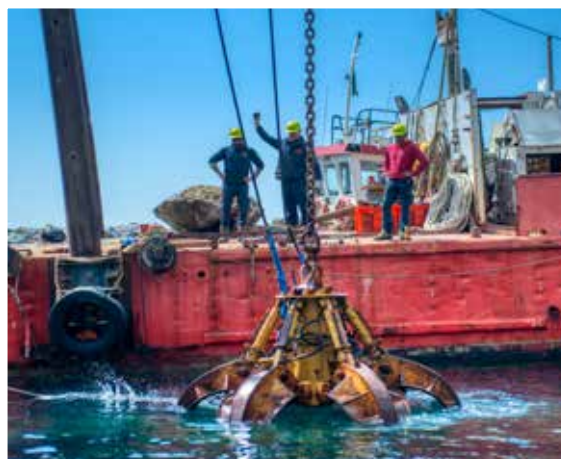
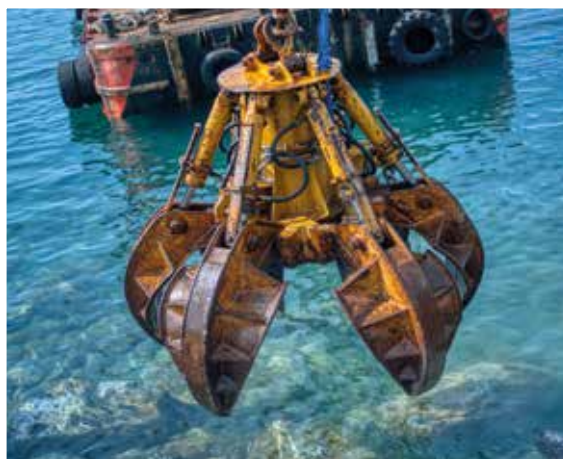
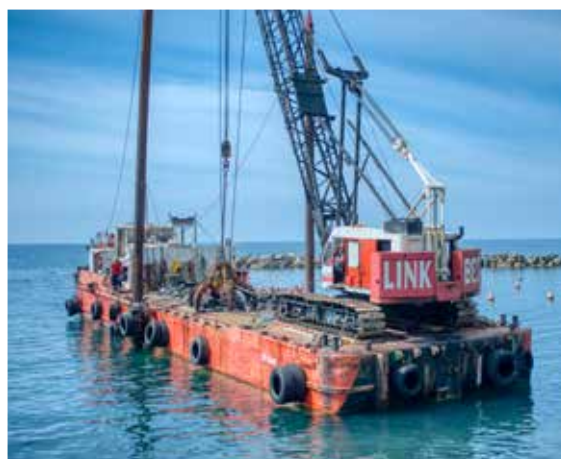
## Marine Vessels

PONTOON ALABAMA	SP 4649
PONTOON TANINO I°	SP 4601
MOTOR PONTOON CEPPE	SP 4591
TUG BOAT CONDOR I°	SP 4104
TUG BOAT MARINA D.	SP 1765
MOTOR BOAT LIBRA	SP 4507
MOTOR BOAT DREAMING	SP 4669
MOTOR BOAT PALMARIA	SP 3648
MOTOR BOAT MARLIN	SP 4260
MOTOR BOAT ANDREA I°	SP 4582
MOTOR BOAT ARTEFATTA	SP 4572
RAFT ARGO	12SP 431
RAFT ARTICO	SP 4668
RAFT ARES	SP 4571
RAFT ARTISTICO	SP 4563



## PONTOON ALABAMA SP 4649

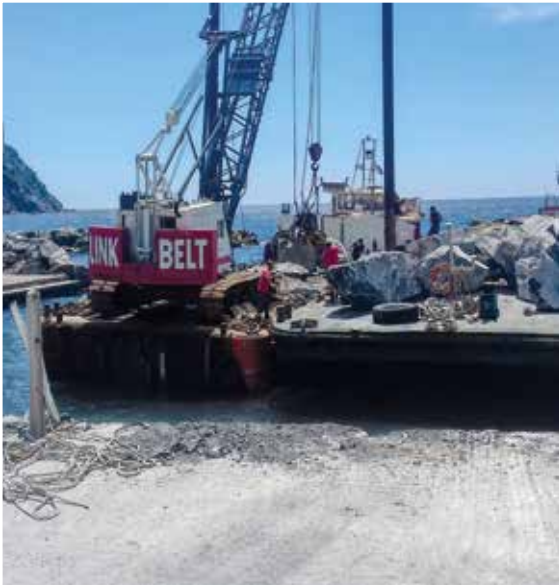
Dimensions (m) **30 x 9 x 3** - all-around sea vessel with lifting **crane Link Belt LS 118**, with board to transport wheeled and crawler vehicles





## PONTOON TANINO I° SP 4601

Dimensions (m) **33 x 11 x 3.15** all-around sea vessel, suitable for use as loading and transport barge





## MOTOR PONTOON CEPPE SP 4591

Dimensions **20 m x 7 m**, equipped with **260 HP**-motor - Speed approx. 8 knots, loading **capacity 35 ton.** - **Hydraulic crane Fassi F 95, 5 ton.** - Silenced generator, water-cooled with continuous supply up to 13 kW / 220 - 380 V - Mooring poles - Deck arrangement for coring drilling - GPS sonar RADAR VHF - Housing used as workshop - Bathroom **10 people, transportable.**



## TUGBOAT CONDOR I° SP 4104

**14 x 4.70 meters**, propelled through a **400 HP** motor – Speed approx. **10 knots**  
**Onbaord crane** 1.5 Ton. – **6 people** – GPS with chart – Radar – AIS – Compass – VHF –  
 Generator 220 – Housing with berths, kitchen, bathroom





## TUGBOAT MARINA D. SP 1765

**15 x 4 meters**, propelled through a **330 HP** motor - Speed approx. **10 knots** – **8 people** – GPS with chart - Radar - AIS - Compass - VHF - Housing with berths, kitchen, bathroom



## MOTOR BOAT LIBRA SP 4507

**14 x 3,50 meters 2 motors 340 HP each.** Speed approx. **25 knots** – **6 people** – GPS with chart – Sonar – Radar – AIS – Compass – VHF – Automatic pilot inside/outside dashboard – Framed generator 220 – Housing equipped for operating briefings – Housing with berths, kitchen, bathroom





## MOTOR BOAT DREAMING SP 4669

**10 x 3,34 meters 2 motors 240 HP each.** Speed approx. **30 knots** – **6 people** – GPS with chart – Sonar – Radar – AIS – Compass – VHF – Automatic pilot – Framed generator 220 – Housing equipped for operating briefings – Housing with berths, kitchen, bathroom



## MOTOR BOAT PALMARIA SP 3648

**9.20 m x 3.20 m** equipped with **2 motors 120 HP** Speed approx. **18 knots** - GPS with charge - Sonar - Radar - AIS - VHF - Framed generator 220 - **8 people** - Housing equipped for operating briefings - Housing with berths, kitchen, bathroom



## MOTOR BOAT MARLIN SP 4260

**8.00 m x 2.80 m**, with onboard motor **75 HP** - Speed approx. **10 knots**  
 - Wide covered deck surface, wide forepeak - **8 people** - Awning





### RAFT ARTICO SP 4668

**BWA 740 - 7.40 X 2.50 m** with outboard motor, **140 HP** – Speed approx. **35 knotes**  
GPS – Radar – AIS – VHF – **8 people**



### RAFT ARGO 12SP 431

**BWA 740 - 7.40 X 2.50 m** with outboard motor, **150 HP** – Speed approx. **40 knotes**  
GPS – Sonar – Radar – AIS – VHF – 8 people



## RAFT ARES SP 4571

**6.50 X 2.50 m** with outboard motor, **90 HP** – Speed approx. **35 knots**  
GPS – VHF – **6 people**



## AUXILIARY VESSELS:

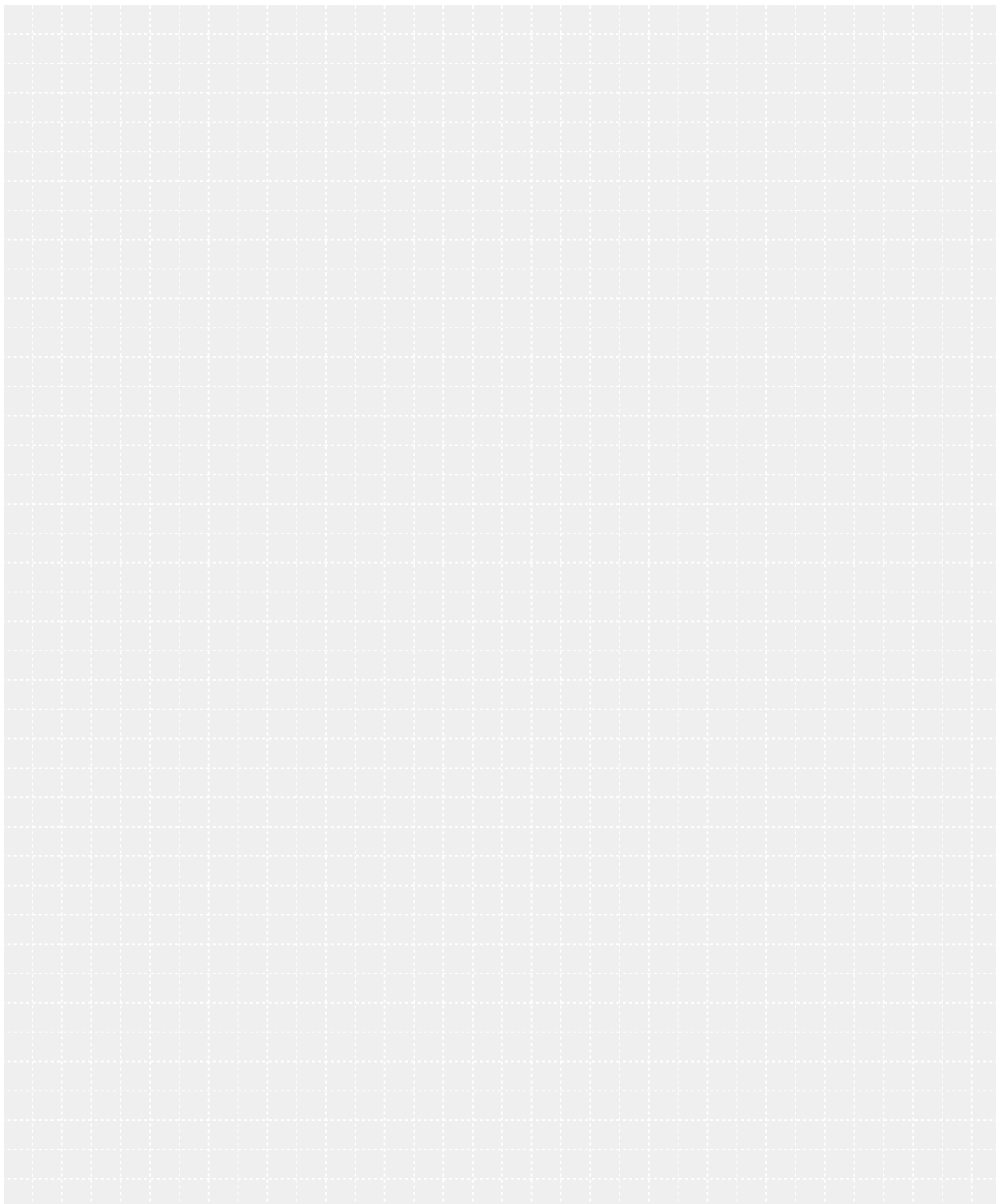
**Raft Artistico** SP 4563 **4,50 m - 15 HP - 2 people**

**Motor Boat Andrea I°** SP 4582 **4,50 m - 25 HP - 4 people**

**Motor Boat Artefatta** SP 4572 **5,00 m - 25 HP - 3 people**



# notes





**Sede legale/amministrativa:**  
Via Pitelli 95/A • 19126 La Spezia (Italy)

**Sede operativa:**  
Viale S.Bartolomeo, 777/R Darsena Pagliari • 19126 La Spezia (Italy)

Tel +39 0187 515794 • Fax +39 0187 524674  
mail: artsub@artsub.it • web: www.artsub.it